



SPECIAL BULLETIN - 30

DATE: 27.05.2021
TIME: 0400 HRS IST

Sub Cyclonic Storm ‘Yaas’ (pronounced as ‘Yass’) weakened into deep depression

The Cyclonic Storm ‘Yaas’ (pronounced as ‘Yass’) over north interior Odisha adjoining Jharkhand moved northwestwards with a speed of about 12 kmph during past 6 hours and weakened into a deep depression and lay centered at 2330 hrs IST of 26th May 2021 over south Jharkhand and adjoining north interior Odisha near latitude 22.4°N and longitude 85.8°E, about 60 km west southwest of Jamshedpur and 110 km south southeast of Ranchi.

The system is likely to move northwestwards and weekend into a depression during next 12 hours.

Warnings:

(i) Rainfall:

Days	Forecast	Heavy Rainfall Warning
Day-1: Valid from upto 0830 Hrs IST of 27.05.21	Light to moderate rain or thundershower very likely to occur at most places over the districts of north Odisha, at a few over the districts of south Odisha.	Red Warning (Take Action) Heavy to very heavy rainfall at a few places over Balasore, Bhadrak, Jajpur, Kendrapada, Jagatsinghpur, Cuttack, Mayurbhanj, Keonjhar and Dhenkanal with isolated extremely heavy fall very likely to occur over the districts of Jajpur, Mayurbhanj, Keonjhar and Dhenkanal. Yellow Warning (Be updated) Heavy very heavy rainfall very likely to occur at isolated places over the districts of Anugul, Deogarh, Sundergarh and Sambalpur
Day-2: Valid from 0830 Hrs IST of 27.05.21 to 0830 Hrs IST of 28.05.21.	Light to moderate rain or thundershower very likely to occur at many places over the districts of north interior Odisha, at a few over the districts of north coastal Odisha and at one or two places over the districts of south Odisha.	Yellow Warning (Be updated) Heavy rainfall very likely to occur at isolated places over the districts of Sundergarh, and Keonjhar.

(ii) Wind warning

- Gale wind speed reaching 50-60kmph gusting 70 kmph is likely to prevail over Northwest Bay of Bengal and along & off north Odisha coast.
- Gale wind speed reaching 55-65 kmph gusting 75 kmph would prevail over north interior Districts of Odisha during next 3 hours and decrease gradually thereafter.
- Gale wind speed reaching 40-50 kmph gusting to 60 kmph would prevail over Puri, Cuttack, Khurda, Dhenkanal and Keonjhar districts of Odisha during next 3 hours and decrease thereafter. Squally wind speed reaching 50-60 kmph gusting to 70 kmph would prevail over remaining interior districts of north Odisha during next 3 hours and reduce gradually thereafter..

(iii) Sea condition

- Sea condition would be very rough to High over northwest Bay of Bengal along & off Odisha–West Bengal coasts during next 6 hours and improve gradually thereafter.

Fishermen Warning

The fishermen are advised not to venture into sea along and off Odisha coast and North Bay of Bengal till 27th May, 2021.

(v)Port Warning:

Keep hoisted Local Cautionary Signal No. 3 (LC3) at all Ports of Odisha.

DAMAGE EXPECTED & ACTION SUGGESTED FOR NORTH INTERIOR DISTRICTS OF ODISHA DURING NEXT 6 HOURS:

- Major damage to thatched houses/ huts. Unattached metal sheets may fly.
- Minor damage to power and communication lines.
- Major damage to Kutchha and some damage to Pucca roads. Flooding of escape routes.
- Breaking of tree branches, uprooting of trees. Damage to banana and papaya trees. Dead limbs blown from trees.
- Judicious regulation of rail and road traffic.
- People in affected areas to remain indoors.

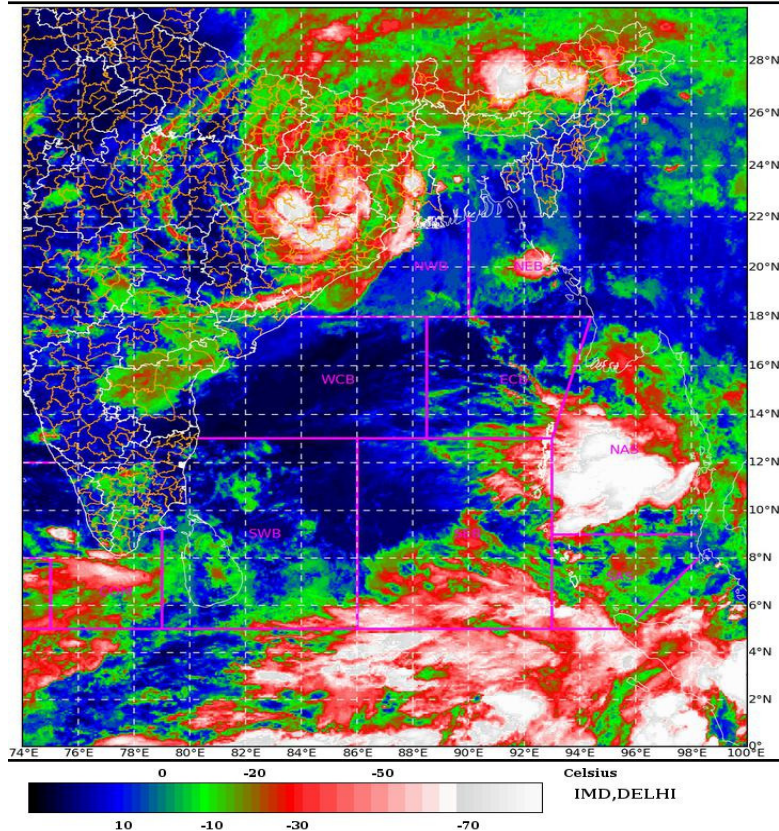
N.B:SPATIAL RAINFALL DISTRIBUTION: ISOLATED :=< 25%, A FEW: 26-50%, MANY: 51-75%, MOST: 76-100%, RAINFALL AMOUNT (MM): HEAVY RAIN: 64.5 – 115.5, VERY HEAVY RAIN: 115.6 – 204.4, EXTREMELY HEAVY RAIN: 204.5 OR MORE. PROBABILISTIC FORECAST: UNLIKELY :=< 25%, LIKELY 26-50%, VERY LIKELY 51-75%, MOST LIKELY > 75%

Dr.H.R. Biswas,
Head & Scientist-E,
Met .Centre Bhubaneswar

To

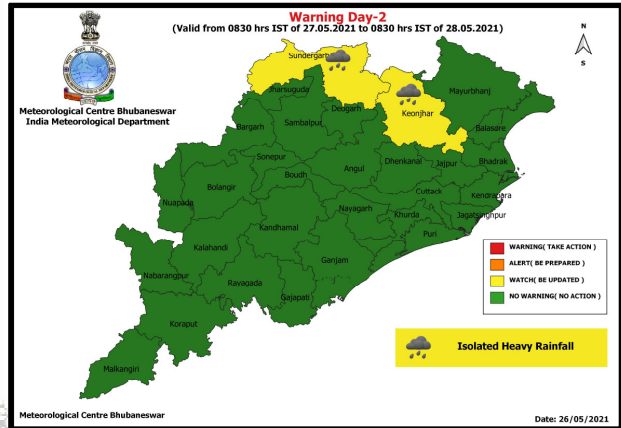
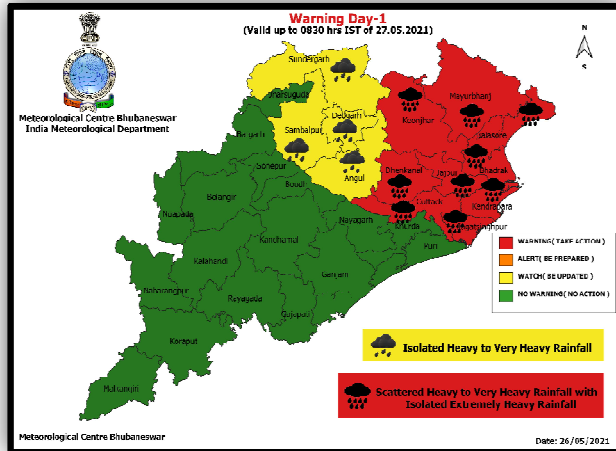
1. CHIEF SECRETARY, GOVT OF ODISHA.
2. PRINCIPAL SECRETARY, REVENUE & DISASTER MANAGEMENT, GOVT. OF ODISHA.
3. PRINCIPAL SECRETARY, DEPT. OF AGRICULTURE, GOVT. OF ODISHA.
4. PRINCIPAL SECRETARY, DEPARTMENT OF WATER RESOURCES, GOVT, OF ODISHA.
5. SPECIAL RELIEF COMMISSIONER (SRC), GOVT. OF ODISHA BHUBANESWAR.
6. REVENUE SECRETARY, GOVT. OF ODISHA, BHUBANESWAR.
7. M.D., OSDMA, GOVT. OF ODISHA, BHUBANESWAR.
8. RDC, CENTRAL DIVISION/ SOUTHERN DIVISION/ NORTHERN DIVISION.
9. AIR CUTTACK / DOORDARSHAN.

SAT : INSAT-3D IMG 26-05-2021/(2000 to 2026) GMT
IMG_TIR1_TEMP 10.8 um 27-05-2021/(0130 to 0156) IST
L1C Mercator





Rainfall Warning Maps for Day-1 to Day-2



OBSERVED AND FORECAST TRACK ALONGWITH QUADRANT WIND DISTRIBUTION OF DEEP DEPRESSION (REMNANT OF VERY SEVERE CYCLONIC STORM "YAAS") OVER SOUTH JHARKHAND AND ADJOINING NORTH INTERIOR ODISHA BASED ON 1800 UTC OF 26th MAY, 2021



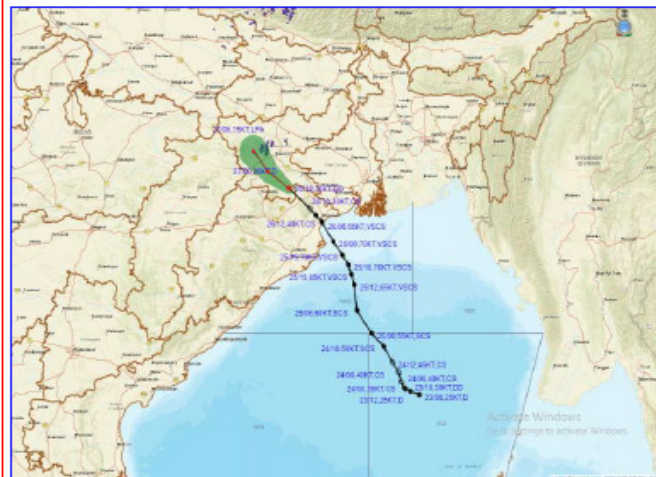
DATE/TIME IN UTC
IST-UTC + 0530
L: LOW PRESSURE AREA
WML: WELL MARKED LOW PRESSURE AREA
D: DEPRESSION (17-27 KT)
DD: DEEP DEPRESSION (28-33 KT)
CS: CYCLONIC STORM (34-47 KT)
SCS: SEVERE CYCLONIC STORM (48-63KT)
VSCS: VERY SEVERE CYCLONIC STORM (64-89 KT)
ESCS: EXTREMELY SEVERE CYCLONIC STORM (90-119 KT)
SuCS: SUPER CYCLONIC STORM (≥ 120 KT)

● LESS THAN 34 KT
○ 34-47 KT
○ ≥ 48 KT
— OBSERVED TRACK
— FORECAST TRACK
— CONE OF UNCERTAINTY

AREA OF MAXIMUM SUSTAINED WIND SPEED:
— 28-33 KT (62-61 KMPH)
— 34-49 KT (62-91 KMPH)
— 50-63 KT (92-117 KMPH)
— ≥ 64 KT (≥ 118 KMPH)

IMPACT OVER THE SEA		
MSW (knot/kmph)	Impact	Action
28-33 (62-61)	Very rough seas	Total suspension of fishing operations
34-49 (62-91)	High to very high seas	Total suspension of fishing operations
50-63 (92-117)	Very high seas	Total suspension of fishing operations
≥ 64 (≥ 118)	Phenomenal	Total suspension of fishing operations

OBSERVED AND FORECAST TRACK ALONGWITH CONE OF UNCERTAINTY OF DEEP DEPRESSION (REMNANT OF VERY SEVERE CYCLONIC STORM "YAAS") OVER SOUTH JHARKHAND AND ADJOINING NORTH INTERIOR ODISHA BASED ON 1800 UTC OF 26th MAY, 2021



DATE/TIME IN UTC
IST-UTC + 0530
L: LOW PRESSURE AREA
WML: WELL MARKED LOW PRESSURE AREA
D: DEPRESSION (17-27 KT)
DD: DEEP DEPRESSION (28-33 KT)
CS: CYCLONIC STORM (34-47 KT)
SCS: SEVERE CYCLONIC STORM (48-63KT)
VSCS: VERY SEVERE CYCLONIC STORM (64-89 KT)
ESCS: EXTREMELY SEVERE CYCLONIC STORM (90-119 KT)
SuCS: SUPER CYCLONIC STORM (≥ 120 KT)

● LESS THAN 34 KT
○ 34.47 KT
○ ≥ 48 KT
— OBSERVED TRACK
— FORECAST TRACK
— CONE OF UNCERTAINTY