



## SPECIAL BULLETIN - 29

DATE: 26.05.2021  
TIME: 2345 HRS IST

### Sub Cyclonic Storm 'Yaas' (pronounced as 'Yass') over north interior Odisha and adjoining Jharkhand.

The Cyclonic Storm 'Yaas' (pronounced as 'Yass') over northeast Odisha moved northwestwards with a speed of about 12 kmph during past 6 hours and lay centred at 2030 hrs IST of today, the 26<sup>th</sup> May, 2021 over north interior Odisha and adjoining Jharkhand, near latitude 22.1°N and longitude 86.2°E, about 60 km west-northwest of Baripada and 160 km south south-east of Ranchi.

The system is very likely to move further northwestwards and weaken into a Deep Depression during next 3-4 hours over Jharkhand.

Forecast track and intensity are given in the following table:

Date/Time(IST)	Position (Lat. °N/ long. °E)	Maximum sustained surface wind speed (Kmph)	Category of cyclonic disturbance
26.05.21/2030	22.1/86.2	65-75 gusting to 85	CYCLONIC STORM
26.05.21/2330	22.4 /85.8	55-65 gusting to 75	DEEP DEPRESSION
27.05.21/0530	23.0/85.0	35-45 gusting to 55	DEPRESSION

### Warnings:

#### (i) Rainfall:

Days	Forecast	Heavy Rainfall Warning
<b>Day-1:</b> Valid from upto 0830 Hrs IST of 27.05.21	Light to moderate rain or thundershower very likely to occur at most places over the districts of north Odisha, at a few over the districts of south Odisha.	<b>Red Warning (Take Action)</b> Heavy to very heavy rainfall at a few places over <b>Balasore, Bhadrak, Jajpur, Kendrapada, Jagatsinghpur, Cuttack, Mayurbhanj, Keonjhar and Dhenkanal</b> with isolated extremely heavy fall very likely to occur over the districts of <b>Jajpur, Mayurbhanj, Keonjhar and Dhenkanal.</b> <b>Yellow Warning (Be updated)</b> Heavy very heavy rainfall very likely to occur at isolated places over the districts of <b>Anugul, Deogarh, Sundergarh and Sambalpur</b>
<b>Day-2:</b> Valid from 0830 Hrs IST of 27.05.21 to 0830 Hrs IST of 28.05.21.	Light to moderate rain or thundershower very likely to occur at many places over the districts of north interior Odisha, at a few over the districts of north coastal Odisha and at one or two places over the districts of south Odisha.	<b>Yellow Warning (Be updated)</b> Heavy rainfall very likely to occur at isolated places over the districts of <b>Sundergarh, and Keonjhar.</b>

#### (ii) Wind warning

- Gale wind speed reaching 60-70 kmph gusting 80 kmph is likely to prevail over Northwest Bay of Bengal and along & off north Odisha coast.
- Gale wind speed reaching 65-75 kmph gusting 85 kmph would prevail over north interior Districts of Odisha during next 3 hours and decrease gradually thereafter.
- Gale wind speed reaching 40-50 kmph gusting to 60 kmph would prevail over Puri, Cuttack, Khurda, Dhenkanal and Keonjhar districts of Odisha during next 3 hours and decrease thereafter. Squally wind speed reaching 55-65 kmph gusting to 75 kmph would prevail over remaining interior districts of north Odisha during next 3 hours and reduce gradually from tonight.

**(iii) Sea condition**

- Sea condition would be very rough to High over northwest Bay of Bengal along & off Odisha–West Bengal coasts during next 6 hours and improve gradually thereafter.

**Fishermen Warning**

The fishermen are advised not to venture into sea along and off Odisha coast and North Bay of Bengal till 27<sup>th</sup> May, 2021.

**(v)Port Warning:**

Keep hoisted Local Cautionary Signal No. 3 (LC3) at all Ports of Odisha .

**DAMAGE EXPECTED & ACTION SUGGESTED FOR NORTH INTERIOR DISTRICTS OF ODISHA DURING NEXT 6 HOURS:**

- Major damage to thatched houses/ huts. Unattached metal sheets may fly.
- Minor damage to power and communication lines.
- Major damage to Kutcha and some damage to Pucca roads. Flooding of escape routes.
- Breaking of tree branches, uprooting of trees. Damage to banana and papaya trees. Dead limbs blown from trees.
- Judicious regulation of rail and road traffic.
- People in affected areas to remain indoors.

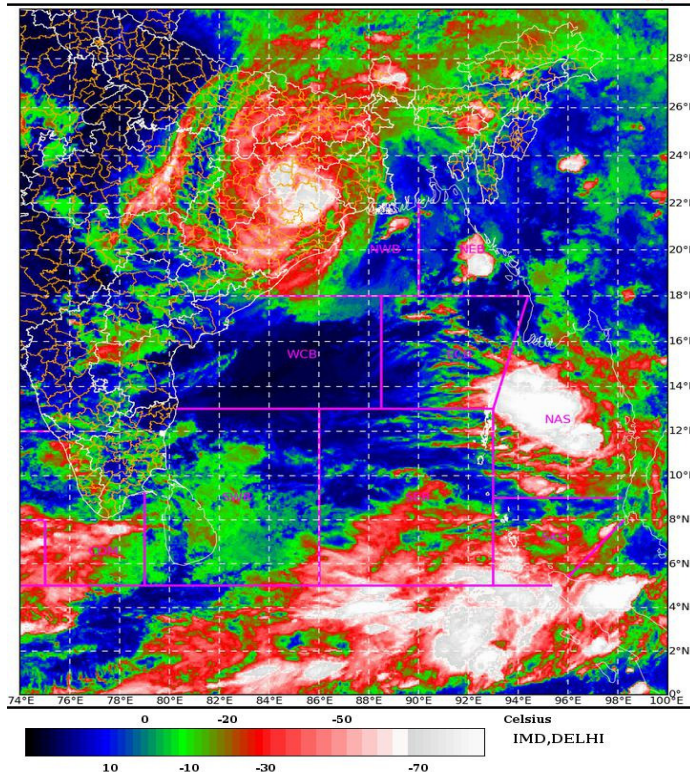
**N.B:**SPATIAL RAINFALL DISTRIBUTION: ISOLATED :=< 25%, A FEW: 26-50%, MANY: 51-75%, MOST: 76-100%, RAINFALL AMOUNT (MM): HEAVY RAIN: 64.5 – 115.5, VERY HEAVY RAIN: 115.6 – 204.4, EXTREMELY HEAVY RAIN: 204.5 OR MORE. PROBABILISTIC FORECAST: UNLIKELY =< 25%, LIKELY 26-50%, VERY LIKELY 51-75%, MOST LIKELY > 75%

Dr.H.R. Biswas,  
Head & Scientist-E,  
Met .Centre Bhubaneswar

To

1. CHIEF SECRETARY, GOVT OF ODISHA.
2. PRINCIPAL SECRETARY, REVENUE & DISASTER MANAGEMENT, GOVT. OF ODISHA.
3. PRINCIPAL SECRETARY, DEPT. OF AGRICULTURE, GOVT. OF ODISHA.
4. PRINCIPAL SECRETARY, DEPARTMENT OF WATER RESOURCES, GOVT. OF ODISHA.
5. SPECIAL RELIEF COMMISSIONER (SRC), GOVT. OF ODISHA BHUBANESWAR.
6. REVENUE SECRETARY, GOVT. OF ODISHA, BHUBANESWAR.
7. M.D., OSDMA, GOVT. OF ODISHA, BHUBANESWAR.
8. RDC, CENTRAL DIVISION/ SOUTHERN DIVISION/ NORTHERN DIVISION.
9. AIR CUTTACK / DOORDARSHAN.

SAT : INSAT-3D IMG            26-05-2021/(1500 to 1526) GMT  
IMG\_TIR1\_TEMP 10.8 um    26-05-2021/(2030 to 2056) IST  
L1C Mercator



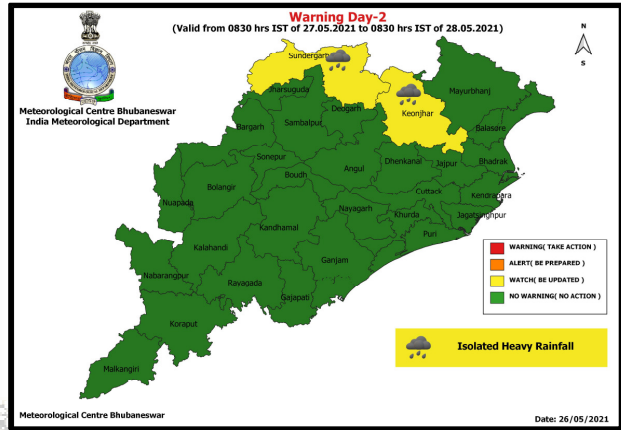
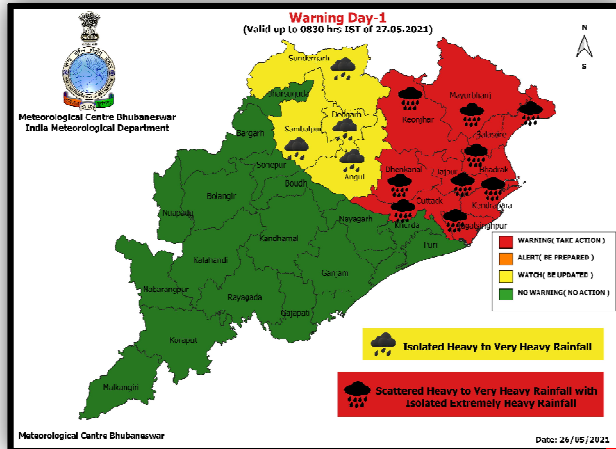


भारतसरकार  
 पृथ्वीविज्ञानमंत्रालय  
 भारतमौसमविज्ञानविभाग  
 मौसमविज्ञानकेंद्र  
 भुवनेश्वर, ओडिशा-751020

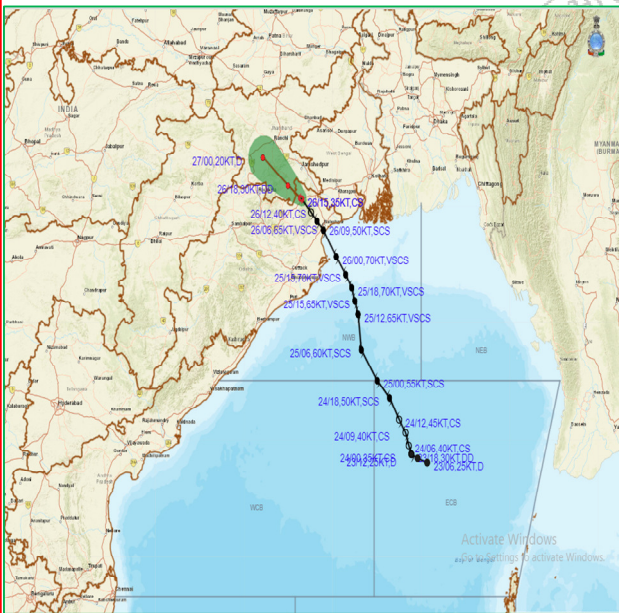


ଭାରତସରକାର  
 ପୃଥିବୀବିଜ୍ଞାନମନ୍ତ୍ରାଳୟ  
 ଭାରତପାଣିପାଗବିଜ୍ଞାନବିଭାଗ  
 ପାଣିପାଗବିଜ୍ଞାନକେନ୍ଦ୍ର  
 ଭୁବନେଶ୍ୱର, ଓଡ଼ିଶା-୭୫୧୦୨୦

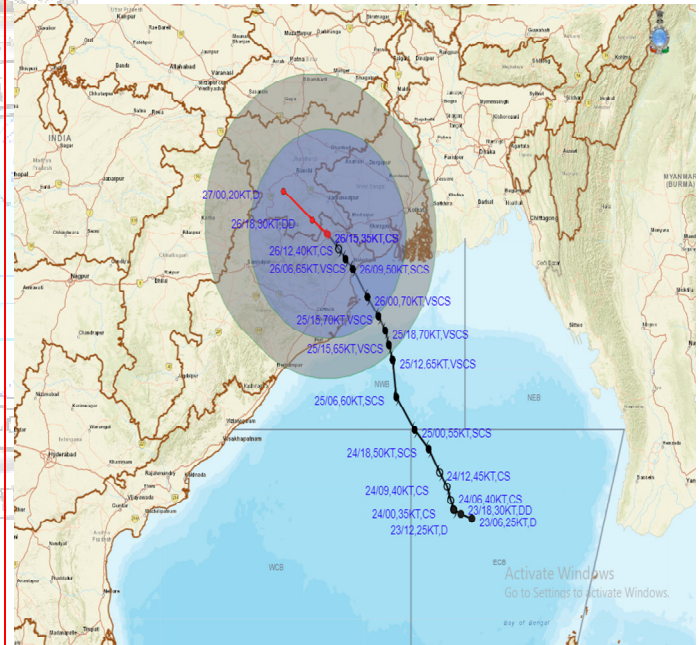
**Rainfall Warning Maps for Day-1 to Day-2**



**OBSERVED AND FORECAST TRACK ALONGWITH CONE OF UNCERTAINTY OF CYCLONIC STORM "YAAS" OVER NORTH INTERIOR ODISHA AND**



**OBSERVED AND FORECAST TRACK ALONGWITH QUADRANT WIND DISTRIBUTION OF CYCLONIC STORM "YAAS" OVER NORTH INTERIOR ODISHA AND ADJOINING JHARKHAND BASED ON 1500 UTC OF 26<sup>TH</sup> MAY, 2021**



DATE/TIME IN UTC  
 IST-UTC + 0530  
 L: LOW PRESSURE AREA  
 WML: WELL MARKED LOW PRESSURE AREA  
 D: DEPRESSION (17-27 KT)  
 DD: DEEP DEPRESSION (28-33 KT)  
 CS: CYCLONIC STORM (34-47 KT)  
 SCS: SEVERE CYCLONIC STORM (48-63KT)  
 VSCS: VERY SEVERE CYCLONIC STORM (64-89 KT)  
 ESCS: EXTREMELY SEVERE CYCLONIC STORM (90-119 KT)  
 SCS: SUPER CYCLONIC STORM (≥ 120 KT)

● LESS THAN 34 KT  
 ☁ 34.47 KT  
 ☁ ≥ 48 KT  
 — OBSERVED TRACK  
 — FORECAST TRACK  
 ● CONE OF UNCERTAINTY

DATE/TIME IN UTC  
 IST-UTC + 0530  
 L: LOW PRESSURE AREA  
 WML: WELL MARKED LOW PRESSURE AREA  
 D: DEPRESSION (17-27 KT)  
 DD: DEEP DEPRESSION (28-33 KT)  
 CS: CYCLONIC STORM (34-47 KT)  
 SCS: SEVERE CYCLONIC STORM (48-63KT)  
 VSCS: VERY SEVERE CYCLONIC STORM (64-89 KT)  
 ESCS: EXTREMELY SEVERE CYCLONIC STORM (90-119 KT)  
 SCS: SUPER CYCLONIC STORM (≥ 120 KT)

● LESS THAN 34 KT  
 ☁ 34.47 KT  
 ☁ ≥ 48 KT  
 — OBSERVED TRACK  
 — FORECAST TRACK  
 ● CONE OF UNCERTAINTY  
 AREA OF MAXIMUM SUSTAINED WIND SPEED:  
 28-33 KT (62-61 KMPH)  
 34-49 KT (62-91 KMPH)  
 50-63 KT (92-117 KMPH)  
 ≥ 64 KT (≥ 118 KMPH)

**IMPACT OVER THE SEA**

MSW (knot/kmph)	Impact	Action
28-33 (52-61)	Very rough seas	Total suspension of fishing operations
34-49 (62-91)	High to very high seas	Total suspension of fishing operations
50-63 (92-117)	Very high seas	Total suspension of fishing operations