



## SPECIAL BULLETIN - 31

DATE: 27.05.2021  
TIME: 1100 HRS IST

### Sub: Deep Depression over south Jharkhand and neighborhood

The **Deep Depression** over south Jharkhand and adjoining north interior Odisha moved northwestwards with a speed of about 07 kmph during past 6 hours and lay centred at 0530 hrs IST of today, the 27<sup>th</sup> May, 2021 over south Jharkhand and neighbourhood, near latitude 22.7°N and longitude 85.5°E, about 70km west-southwest of Jamshedpur and 70 km south south-east of Ranchi.

The system is very likely to move nearly northwards and weaken gradually into a Depression during next 06 hours.

### Warnings:

#### (i) Rainfall:

Days	Forecast	Heavy Rainfall Warning
Day-1: Valid up to 0830 Hrs IST of 28.05.21.	Light to moderate rain or thundershower very likely to occur at many places over the districts of north interior Odisha, at a few over the districts of north coastal Odisha and at one or two places over the districts of south Odisha.	<b>Yellow Warning (Be updated)</b> <b>Heavy rainfall</b> very likely to occur at isolated places over the districts of <b>Sundergarh, Deogarh and Keonjhar.</b>

#### (ii) Wind warning

- Squally wind speed reaching 50-60 kmph gusting to 70 kmph would prevail over south Jharkhand and adjoining districts of north interior Districts of Odisha during next 6 hours and decrease gradually thereafter.

#### Fishermen Warning

The fishermen are advised not to venture into sea along and off Odisha coast and North Bay of Bengal till 27<sup>th</sup> May, 2021.

#### (v)Port Warning: NIL

### DAMAGE EXPECTED & ACTION SUGGESTED FOR NORTH INTERIOR DISTRICTS OF ODISHA DURING NEXT 6 HOURS:

- Minor damage to thatched houses/ huts.
- Minor damage to power and communication lines.
- Minor damage to Kutcha and some damage to Pucca roads.
- Breaking of tree branches. Damage to banana and papaya trees.
- Judicious regulation of rail and road traffic.

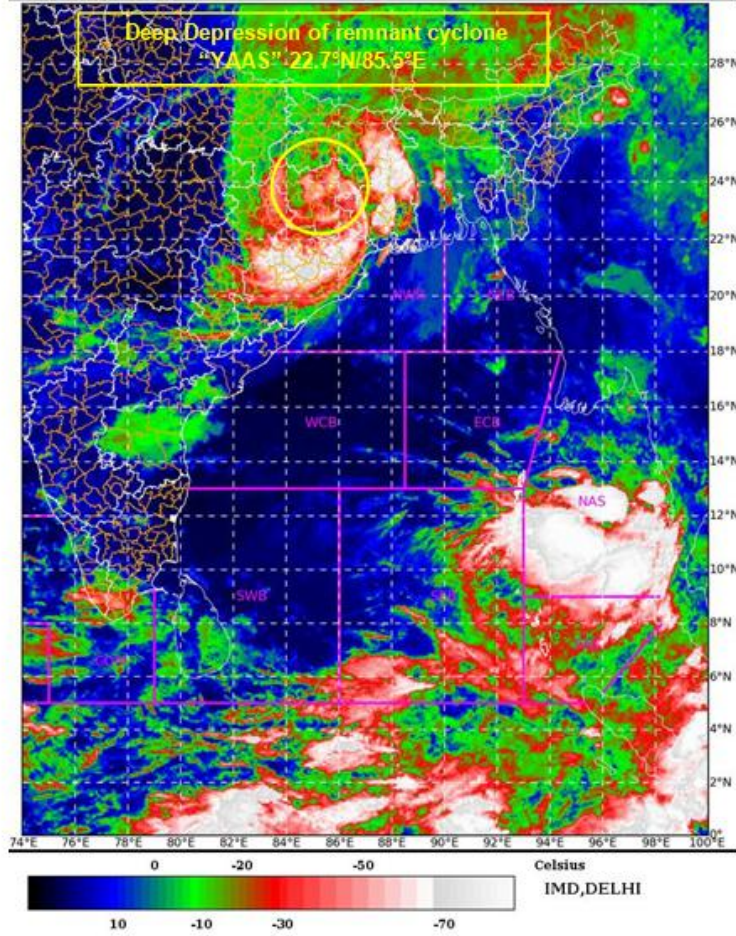
**N.B:** SPATIAL RAINFALL DISTRIBUTION: ISOLATED :=< 25%, A FEW: 26-50%, MANY: 51-75%, MOST: 76-100%, RAINFALL AMOUNT (MM): HEAVY RAIN: 64.5 – 115.5, VERY HEAVY RAIN: 115.6 – 204.4, EXTREMELY HEAVY RAIN: 204.5 OR MORE. PROBABILISTIC FORECAST: UNLIKELY =< 25%, LIKELY 26-50%, VERY LIKELY 51-75%, MOST LIKELY > 75%

Dr.H.R. Biswas,  
Head & Scientist-E,  
Met .Centre Bhubaneswar

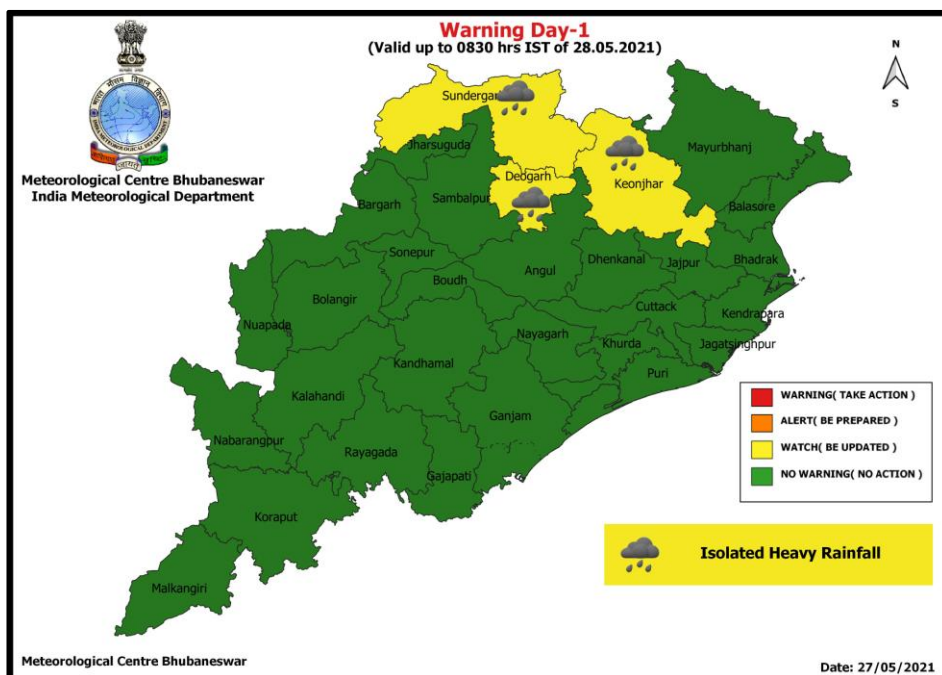
To

- CHIEF SECRETARY, GOVT OF ODISHA.
- PRINCIPAL SECRETARY, REVENUE & DISASTER MANAGEMENT, GOVT. OF ODISHA.
- PRINCIPAL SECRETARY, DEPT. OF AGRICULTURE, GOVT. OF ODISHA.
- PRINCIPAL SECRETARY, DEPARTMENT OF WATER RESOURCES, GOVT, OF ODISHA.
- SPECIAL RELIEF COMMISSIONER (SRC), GOVT. OF ODISHA BHUBANESWAR.
- REVENUE SECRETARY, GOVT. OF ODISHA, BHUBANESWAR.
- M.D., OSDMA, GOVT. OF ODISHA, BHUBANESWAR.
- RDC, CENTRAL DIVISION/ SOUTHERN DIVISION/ NORTHERN DIVISION.
- AIR CUTTACK / DOORDARSHAN.

SAT : INSAT-3D IMG 27-05-2021/(0100 to 0127) GMT  
 IMG\_TIRI\_TEMP 10.8 um 27-05-2021/(0630 to 0657) IST  
 L1C Mercator



Rainfall Warning Maps for Day-1



भारतसरकार  
 पृथ्वीविज्ञानमंत्रालय  
 भारतमौसमविज्ञानविभाग  
 मौसमविज्ञानकेंद्र  
 भुवनेश्वर, ओडिशा-751020



ଭାରତସରକାର  
 ପୃଥିବୀବିଜ୍ଞାନମନ୍ତ୍ରାଳୟ  
 ଭାରତପାଣିପାଗବିଜ୍ଞାନବିଭାଗ  
 ପାଣିପାଗବିଜ୍ଞାନକେନ୍ଦ୍ର  
 ଭୁବନେଶ୍ୱର, ଓଡ଼ିଶା-୭୫୧୦୨୦

